



retail specialists

# THE WAITES

RICHARD ARRINGTON JR BLVD & 7TH AVE S, BIRMINGHAM, AL 35233



**DAVID ASHFORD, CCIM** | 205.999.6552 | [DASHFORD@RETAILSPECIALISTS.COM](mailto:DASHFORD@RETAILSPECIALISTS.COM) • **JARED MOBLEY** | 205.422.6070 | [JMOBLEY@RETAILSPECIALISTS.COM](mailto:JMOBLEY@RETAILSPECIALISTS.COM)  
**KATIE CARLTON** | 770.547.0522 | [KCARLTON@RETAILSPECIALISTS.COM](mailto:KCARLTON@RETAILSPECIALISTS.COM) • [RETAILSPECIALISTS.COM](http://RETAILSPECIALISTS.COM) | BIRMINGHAM • ATLANTA



## PROPERTY HIGHLIGHTS

- **AVAILABLE:** 1,975 SF FORMER FITNESS SPACE, 1,950 SF & 2,345 SF FORMER RESTAURANT SPACE
- THE WAITES OFFERS 16,716 SF OF GROUND-FLOOR RETAIL/RESTAURANT SPACE ALONG WITH 45 LOFT APARTMENTS
- **TENANTS:** SMOOTHIE KING, YUMMEFY, PNC, OTSUKA RAMEN, SHWARMA TIME
- **LOCATED TWO BLOCKS FROM UAB HOSPITAL AND CAMPUS, CURRENTLY UNDERGOING \$335 MILLION IN RENOVATIONS**

**DAVID ASHFORD, CCIM** | 205.999.6552 | DASHFORD@RETAILSPECIALISTS.COM • **JARED MOBLEY** | 205.422.6070 | JMOBLEY@RETAILSPECIALISTS.COM  
**KATIE CARLTON** | 770.547.0522 | KCARLTON@RETAILSPECIALISTS.COM • RETAILSPECIALISTS.COM | BIRMINGHAM • ATLANTA

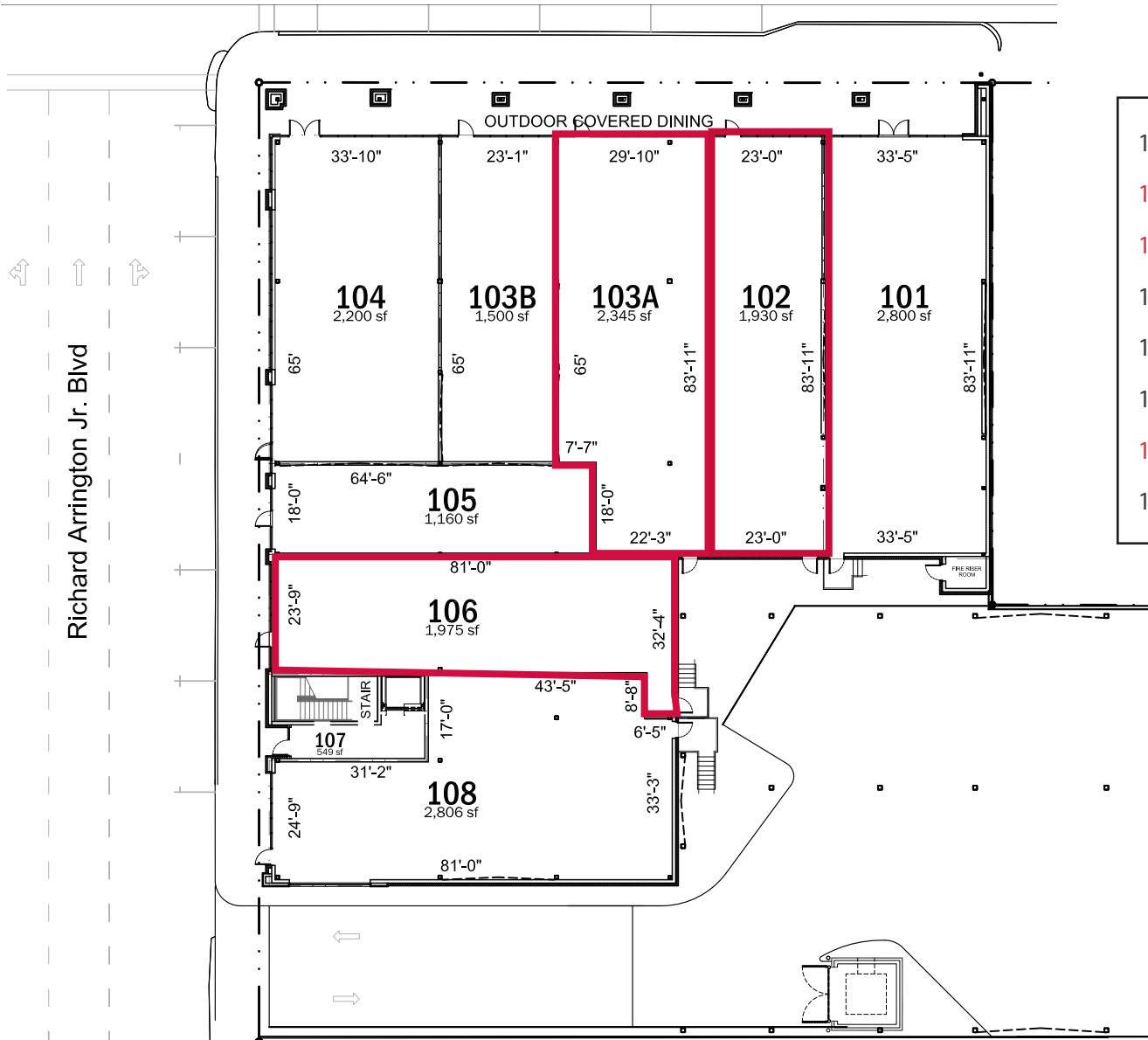


**DAVID ASHFORD, CCIM** | 205.999.6552 | DASHFORD@RETAILSPECIALISTS.COM • **JARED MOBLEY** | 205.422.6070 | JMOBLEY@RETAILSPECIALISTS.COM  
**KATIE CARLTON** | 770.547.0522 | KCARLTON@RETAILSPECIALISTS.COM • RETAILSPECIALISTS.COM | BIRMINGHAM • ATLANTA

NO WARRANTY EXPRESSED OR IMPLIED HAS BEEN MADE AS TO THE ACCURACY OF THE INFORMATION PROVIDED HEREIN, NO LIABILITY FOR ERROR OR OMISSIONS.



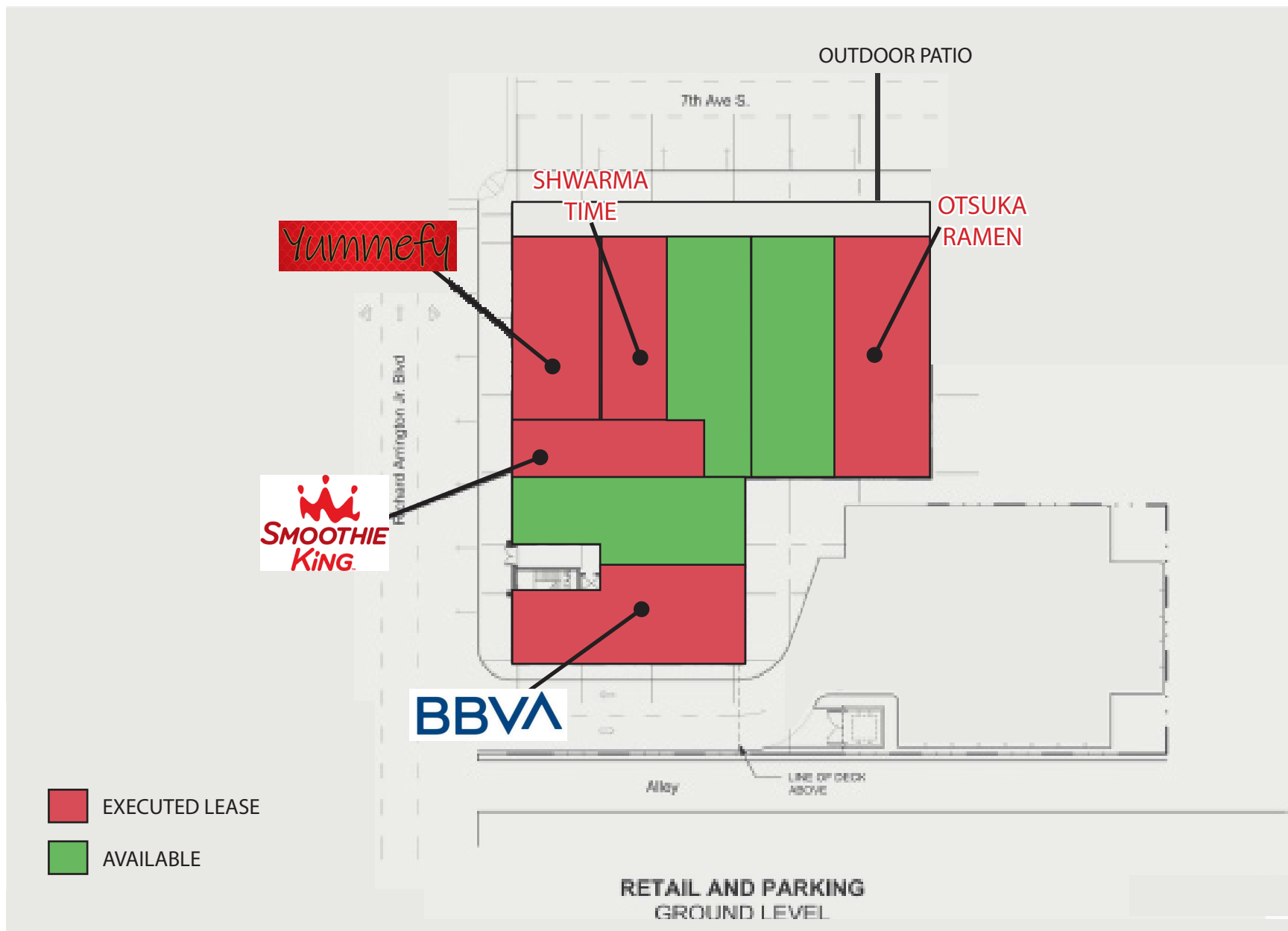
DAVID ASHFORD, CCIM | 205.999.6552 | DASHFORD@RETAILSPECIALISTS.COM • JARED MOBLEY | 205.422.6070 | JMOBLEY@RETAILSPECIALISTS.COM  
 KATIE CARLTON | 770.547.0522 | KCARLTON@RETAILSPECIALISTS.COM • RETAILSPECIALISTS.COM | BIRMINGHAM • ATLANTA



Richard Arrington Jr. Blvd

101	Otsuka Ramen	2,800
102	AVAILABLE (former restaurant space)	1,930
103A	AVAILABLE (former restaurant space)	2,345
103B	Shwarma Time	1,500
104	Yummefy	2,200
105	Smoothie King	1,160
106	AVAILABLE	1,975
108	BBVA	2,806

- THREE STORIES OF LOFT APARTMENTS ABOVE GROUND-FLOOR RETAIL
- LARGE, COVERED OUTDOOR DINING SPACE ON 7TH AVE



DAVID ASHFORD, CCIM | 205.999.6552 | DASHFORD@RETAILSPECIALISTS.COM • JARED MOBLEY | 205.422.6070 | JMOBLEY@RETAILSPECIALISTS.COM  
KATIE CARLTON | 770.547.0522 | KCARLTON@RETAILSPECIALISTS.COM • RETAILSPECIALISTS.COM | BIRMINGHAM • ATLANTA



## BIRMINGHAM MARKET OVERVIEW

Birmingham is one of Alabama’s largest cities with a population of approximately 212,000 and a Birmingham-Hoover MSA population of nearly 1,080,000. The city boasts a vibrant downtown, a burgeoning loft community, a world-class culinary scene, and more green space per capita than any other city in the nation, making it one of America’s most livable cities. The Birmingham MSA has consistently been rated as one of America’s best places to live and work and continues to gain accolades for both its way of life and downtown revitalizations.

Downtown Birmingham has seen much growth in the past five-ten years, which has contributed to established Districts throughout the city. The subject property is located within the Medical District which includes UAB Medical Center and School of Medicine, Children’s Hospital of Alabama, and the VA Medical Center. Minutes away are the Southside Entertainment District which includes event venues such as WorkPlay and Iron City. Also nearby is the Parkside District which includes Railroad Park, Regions Field, and multiple housing and hotel projects.

### LARGEST EMPLOYERS

- University of Alabama at Birmingham
- Regions Financial Corporation
- AT&T
- St. Vincent’s Healthy System
- Baptist Health System, Inc.
- Alabama Power Company
- Children’s Health System
- BBVA Compass
- Birmingham VA Medical Center
- Wells Fargo

### HOSPITAL INFO

Hospital/Clinic	# of Employers	Distance from Site (Walking Time)
UAB	28,000	0.3 MI (2 MIN)
KIRKLIN CLINIC	600+	0.3 MI (2 MIN)
VA HOSPITAL	3,000	0.3 MI (2 MIN)
CHILDRENS HOSPITAL	5,500	0.5 MI (9 MIN)
ST. VINCENT’S (UAB)	4,800	0.8 MI (12 MIN)

### DEMOGRAPHICS

	1 Mile	3 Miles	5 Miles
POPULATION	15,086	77,885	165,033
HOUSEHOLDS	7,531	35,909	71,793
MEDIAN HH INCOME	\$58,676	\$59,758	\$61,373
BUSINESSES	3,956	11,531	16,813
<b>DAYTIME POPULATION</b>	<b>137,208</b>	<b>233,916</b>	<b>324,374</b>

\*2024 Demographics from SiteWise Pro



## BIRMINGHAM ACCOLADES

- **America's Most Affordable City in 2015** (Forbes, March 2015)
- **America's Best City for 2014** (Movoto)
- **Host of the 2022 World Games**
- **#2 Housing Market in the Country for Millennials** (Builder, July 2014)
- **Top 10 Happiest Cities to Work In** (Forbes, January 2015)
- **Regions Field named "AA Ballpark of the Year"** (ballparkdigest.com, June 2015)
- **UAB School of Medicine ranked #10 in Nation for Primary Care** (U.S. News & World Report)
- **Railroad Park named "One of the 10 Best Parks that Help Revive their City"** (USA Today)
- **One of the Best Cities to Find a Startup Job** (ZipRecruiter, February 2015)
- **Top 10 Best Downtowns** (Livability, March 2014)
- **Top 10 Cities with the Friendliest Local Businesses** (Groupon)
- **One of America's Best Cities for Global Trade** (GlobalTrade, November 2014)
- **A City on the Upswing** (National Geographic, March 2013)
- **Top 30 Best Cities for young Entrepreneurs** (Under 30 CEO)
- **UAB currently undergoing \$335M in renovations**



Railroad Park



UAB Current Renovations

