

0.67 ACRES WITH US-280 FRONTAGE

16456 US-280, CHELSEA, ALABAMA 35043



PROPERTY FOR SALE

Excellent location on US-280 with visibility to over 31,000 vehicles per day

- 0.67 acres in the center of Chelsea's retail corridor, property has cross access with Advance Auto Parts, so easy ingress/egress shared with national retailer
- Chelsea is one of Birmingham's fastest growing suburbs and sits on US-280, a main thoroughfare connecting Birmingham to locations such as Auburn/Opelika, Lake Martin, Montgomery, and Georgia
- **SALE PRICE: \$160,000**

DAVID PLUMMER

205.314.0395

david@retailspecialists.

No warranty expressed or implied has been made as to the accuracy of the information provided herein, no liability for error or omissions.

	3-Mile Radius	5-Mile Radius	10 Min Drive Time
Population	12,554	32,997	23,219
Med HHI	\$96,689	\$109,344	\$102,093
Growth	15.8%	11.57%	13.09%

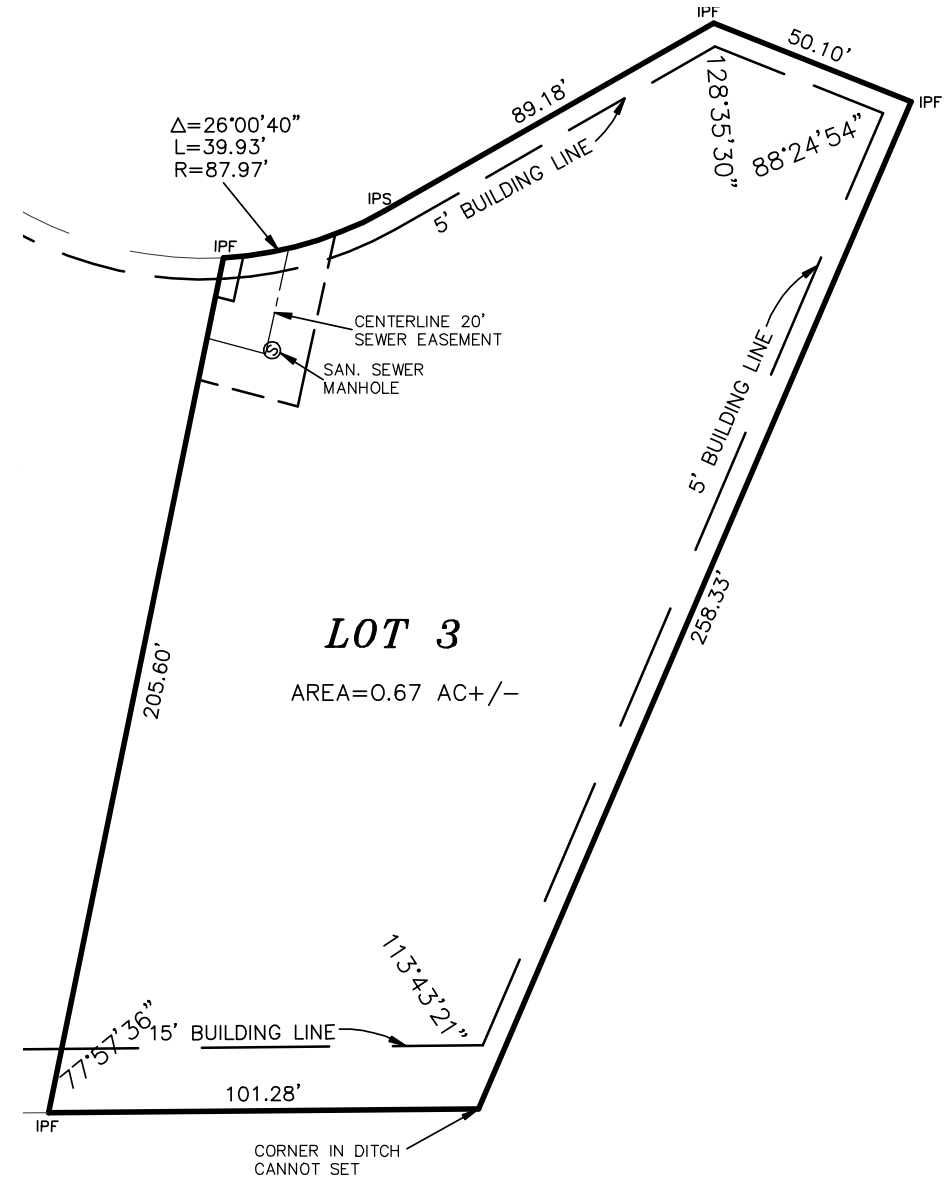
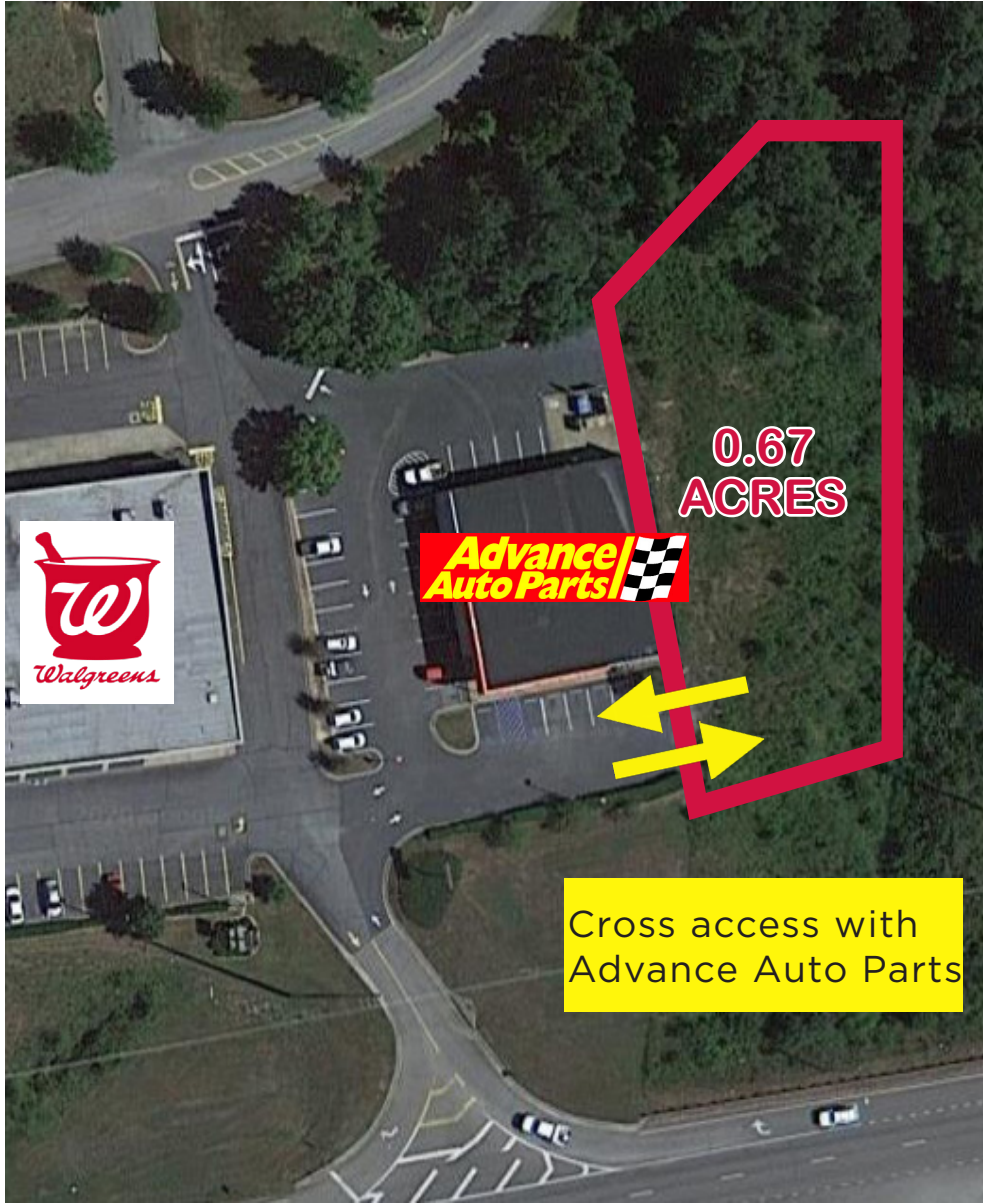
Growth estimated 2024-2029

RETAIL SPECIALISTS, LLC
Birmingham | Atlanta
retailspecialists.com

0.67 ACRES WITH US-280 FRONTAGE

16456 US-280, CHELSEA, ALABAMA 35043

PROPERTY SURVEY | **FOR SALE**



DAVID PLUMMER

205.314.0395

david@retailspecialists.

No warranty expressed or implied has been made as to the accuracy of the information provided herein, no liability for error or omissions.

RETAIL SPECIALISTS, LLC
Birmingham | Atlanta
retailspecialists.com

