

# THE ARCADIA

MIXED-USE DEVELOPMENT IN ALABAMA'S FASTEST GROWING CITY



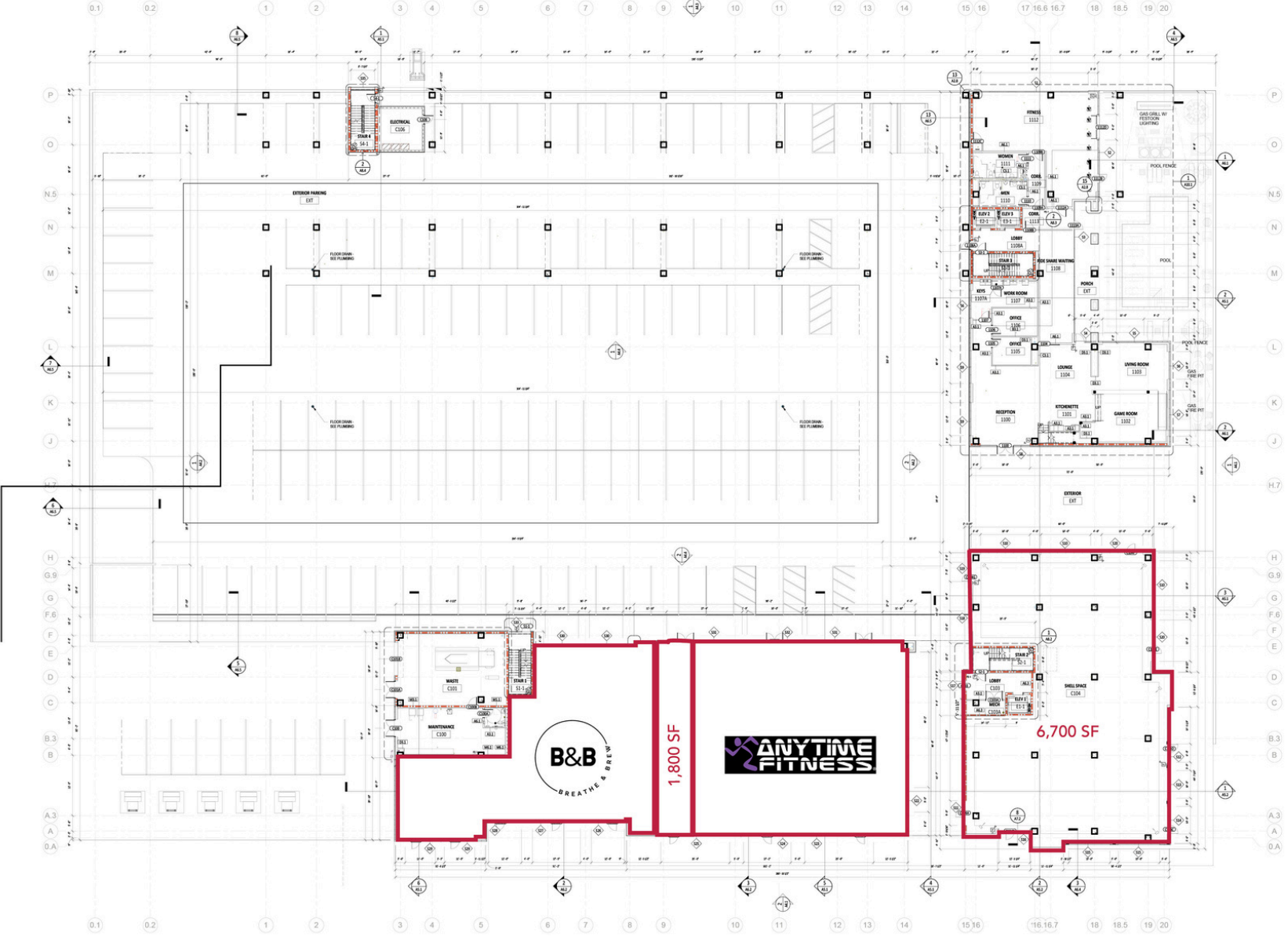
# HUNTSVILLE'S MOST UNIQUE LIVE, WORK, PLAY DESTINATION

The Arcadia at 4810 Bradford Drive is an exciting new development located in the heart of Huntsville's Cummings Research Park, the nation's 2nd largest research park. The site is located on one of the busiest corners in the park, and in close proximity to the U.S. Space & Rocket Center and the University of Alabama at Huntsville. Alabama's newest STEM high school, the Alabama School of Cyber Technology and Engineering is located directly across the street.

Now leasing restaurant/retail ground-floor space. Join Anytime Fitness and Breathe & Brew! This offers a unique opportunity to capture over 25,000 employees of Research Park and 89,593 daytime population within a 3-mile radius of the site. Floors 2-5 contain 250 residential units.



# Level 1 Site Plan

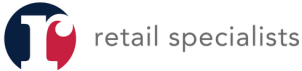


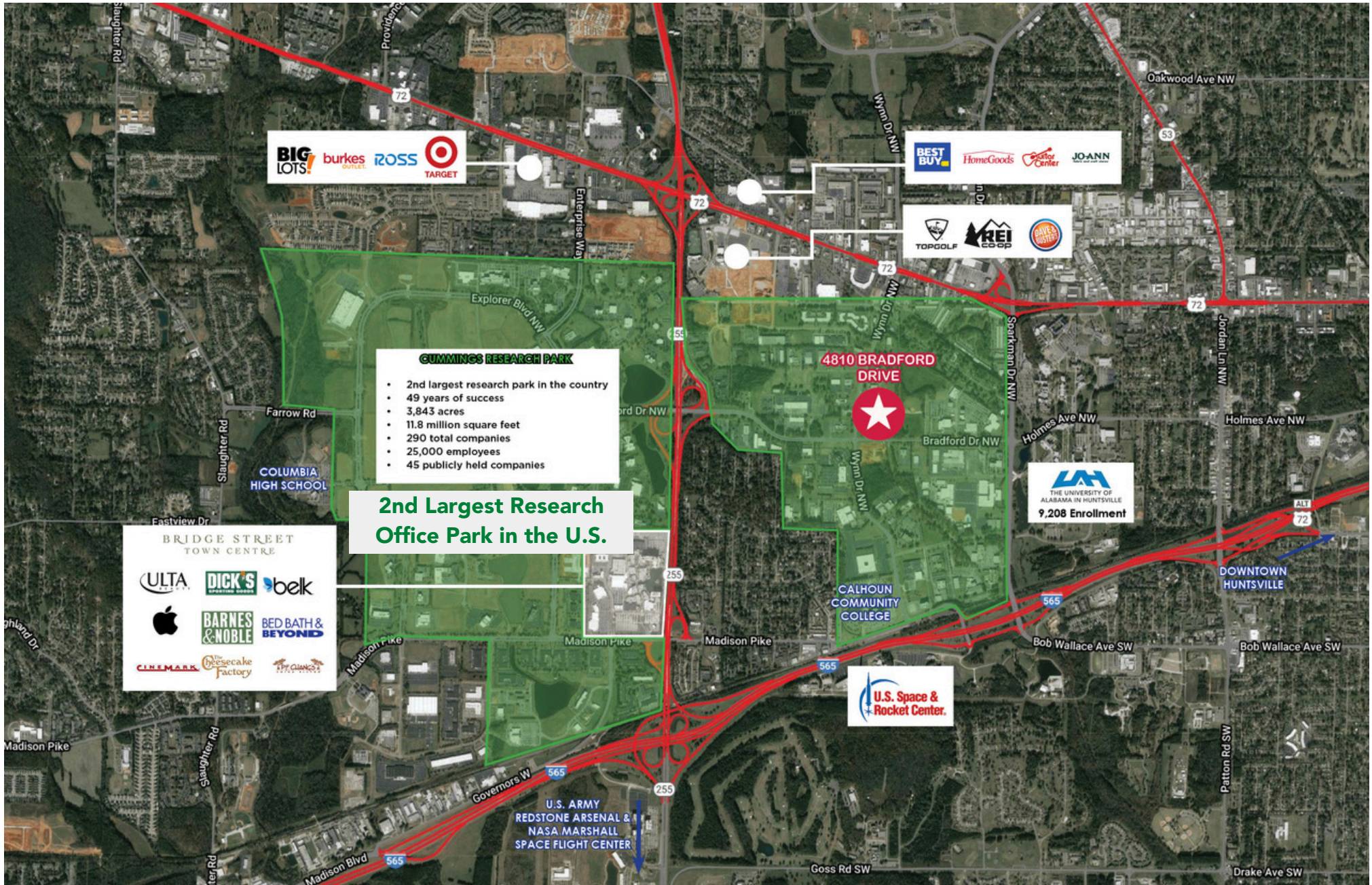
LEVEL 1 - FLOOR PLAN

DAVID ASHFORD, CCIM  
205.999.6552  
dashford@retailspecialists.com

BRANDON CAIN  
205.994.1536  
bcain@retailspecialists.com

KATIE CARLTON  
770.547.0522  
kcarlton@retailspecialists.com





DAVID ASHFORD, CCIM  
 205.999.6552  
 dashford@retailspecialists.com

BRANDON CAIN  
 205.994.1536  
 bcain@retailspecialists.com

KATIE CARLTON  
 770.547.0522  
 kcarlton@retailspecialists.com

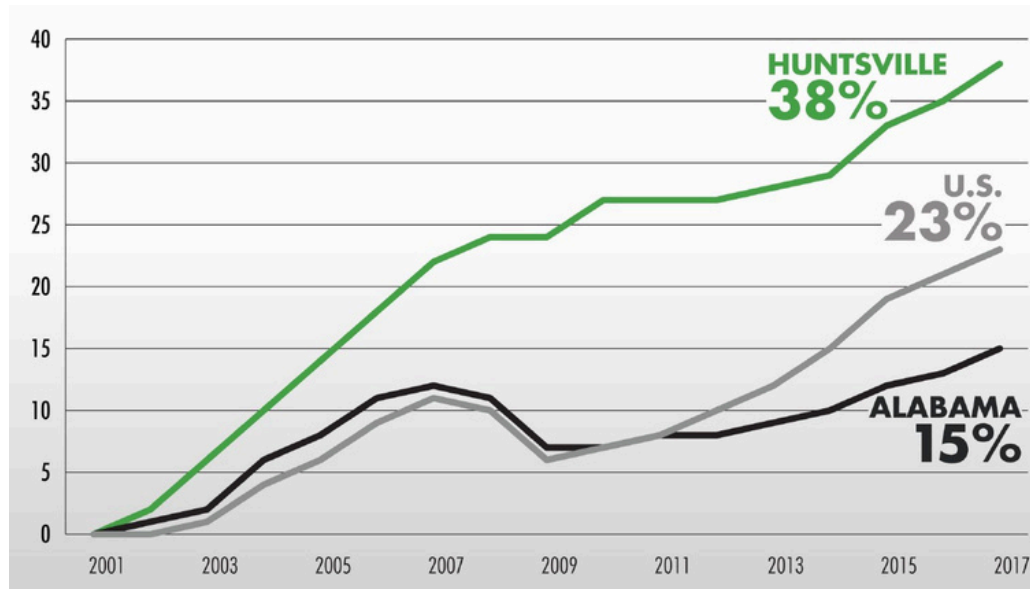


DAVID ASHFORD, CCIM  
 205.999.6552  
 dashford@retailspecialists.com

BRANDON CAIN  
 205.994.1536  
 bcain@retailspecialists.com

KATIE CARLTON  
 770.547.0522  
 kcarlton@retailspecialists.com

## ECONOMIC GROWTH INDEX



\*Data derived from Federal Reserve Bank of Atlanta

## Growth in Huntsville



**#1 IN ALABAMA FOR  
POPULATION GROWTH**

- U.S. Census Bureau

**#1 BEST U.S. CITY TO LIVE**

- U.S. News & World Report

**#2 IN SOUTHEAST FOR  
GDP GROWTH**

- Bureau of Economic Analysis



**#1 BEST PLACE TO LIVE IN ALABAMA**

**#3 MOST AFFORDABLE PLACE TO LIVE IN THE U.S.**

**#16 FASTEST-GROWING PLACES IN THE U.S.**

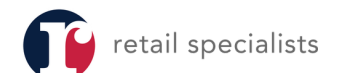
**#53 BEST PLACE TO RETIRE IN THE U.S.**



DAVID ASHFORD, CCIM  
205.999.6552  
dashford@retailspecialists.com

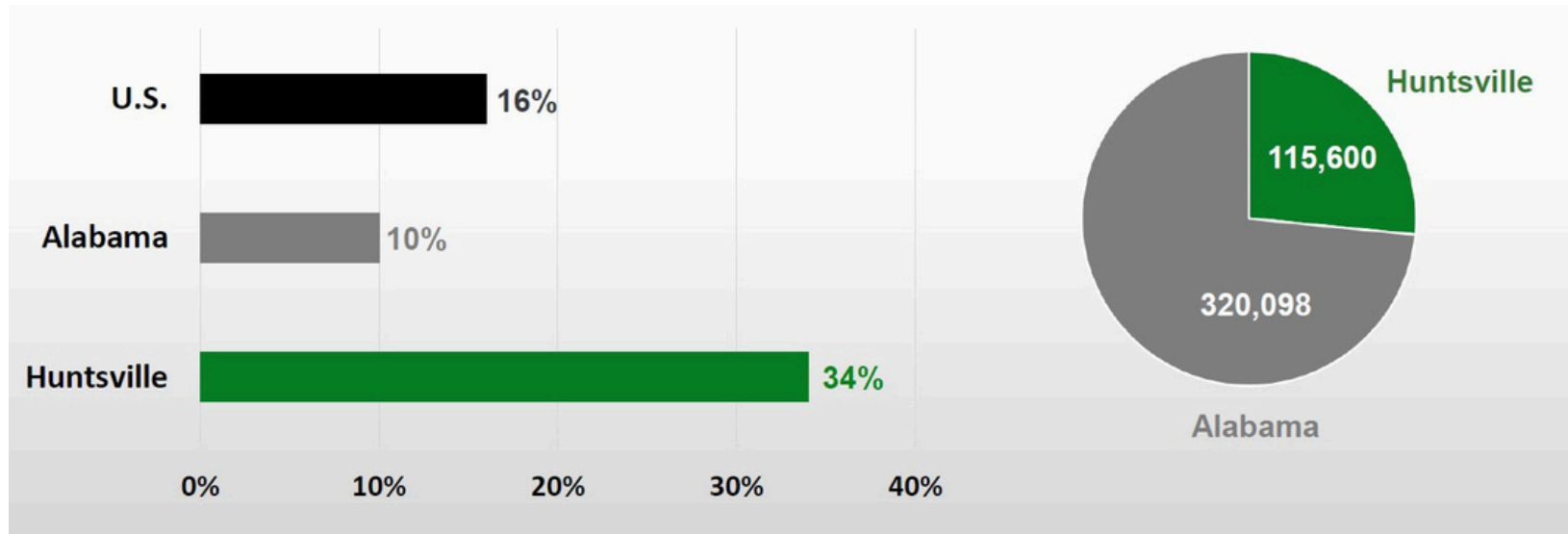
BRANDON CAIN  
205.994.1536  
bcain@retailspecialists.com

KATIE CARLTON  
770.547.0522  
kcarlton@retailspecialists.com



# POPULATION GROWTH

## Growth in Huntsville



*\*Data derived from US Census Bureau*



## HUNTSVILLE FAST FACTS

- According to Bloomberg, Huntsville has several key indicators that make it the 3rd most tech-friendly workforce in the country
- Cumming's Research Park has over 25,000 employees, is the 2nd largest research park in the U.S. and 4th largest in the world
- Cumming's Research Park is located on 3,843 acres and houses over 200 notable firms including Boeing, Lockheed Martin, Northrop Grumman, SAIC, DirecTV and University of Alabama at Huntsville
- 38,000 acre Redstone Arsenal, located just over 5 miles from the site is home to multiple aviation, missile and defense-related installments as well as NASA's Marshall Space Flight Center

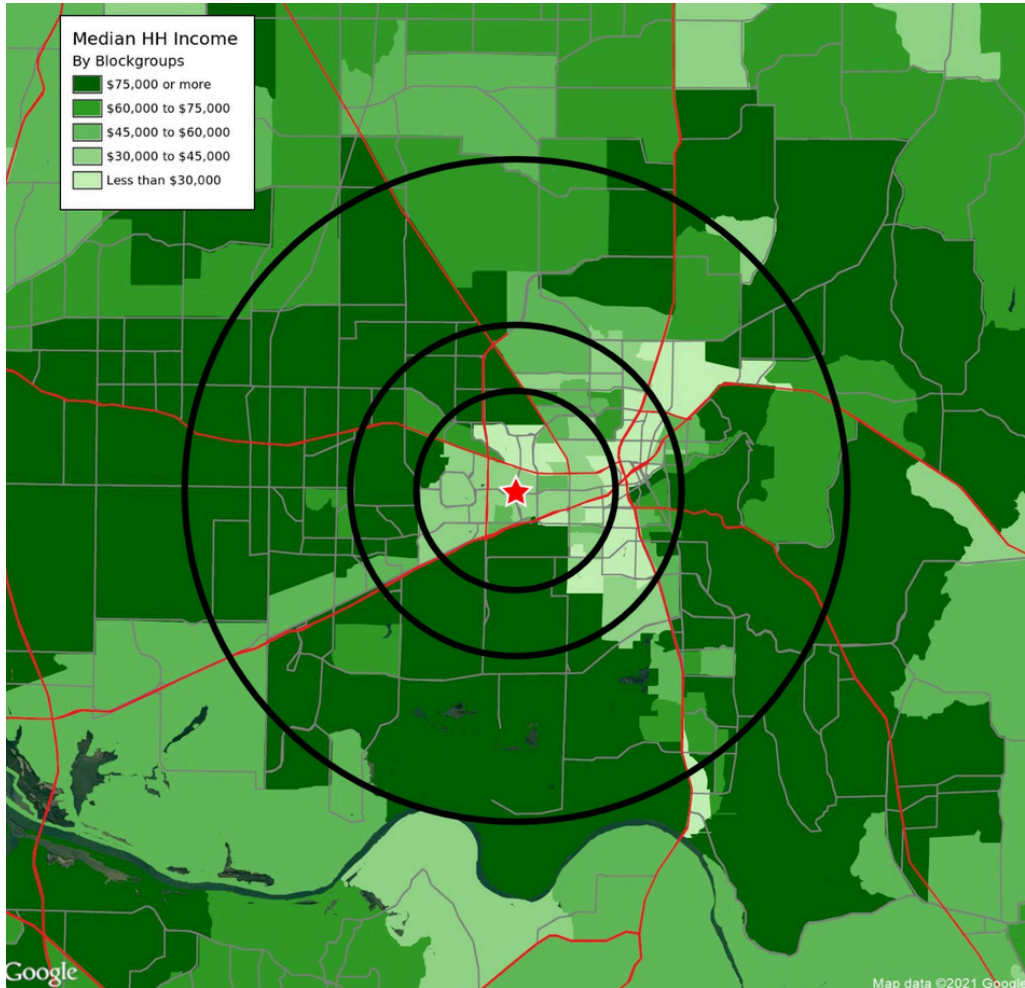
DAVID ASHFORD, CCIM  
205.999.6552  
dashford@retailspecialists.com

BRANDON CAIN  
205.994.1536  
bcain@retailspecialists.com

KATIE CARLTON  
770.547.0522  
kcarlton@retailspecialists.com



## Demographics



POPULATION

**113,474**



AVG HH INCOME

**\$66,468**



HOUSEHOLDS

**48,780**

*\*5 Mile Radius*

### DEMOGRAPHIC PROFILE

	5 MILE	10 MILE
POPULATION	113,474	295,565
HOUSEHOLDS	48,780	121,180
AVG HH INCOME	\$66,468	\$85,208
GROWTH	4.41%	7.67%

*\*Data derived from SiteWise Pro*

With one of the highest growth rates in the country, Huntsville is now Alabama's largest city.

## Additional Photos



DAVID ASHFORD, CCIM  
205.999.6552  
dashford@retailspecialists.com

BRANDON CAIN  
205.994.1536  
bcain@retailspecialists.com

KATIE CARLTON  
770.547.0522  
kcarlton@retailspecialists.com