



retail specialists

Your Retail Real Estate Experts

Anchor Plaza

I-10 & US 49 & Landon Road

Gulfport, MS 39503



FOR LEASE

Property Highlights

- AVAILABLE: 1,440 SF Endcap Space remaining
- Unbeatable location near I-10 at the intersection of US-49 and Landon Road which has the second highest traffic count in the state of Mississippi
- Located near the Naval Construction Battalion Center in the second largest city in Mississippi with an estimated population of approximately 70,000
- Call for more information and pricing



SQ FT
1,440



TRAFFIC
62,418 VPD



PRICE
\$32/PSF

Demographics

	3 mile	5 mile	7 mile
Population	30,862	75,117	107,884
Households	11,400	28,332	41,630
Daytime Pop	32,553	82,202	110,204
Med HH Income	\$45,851	\$46,922	\$47,561

David Plummer david@retailspecialists.com 205.243.6729

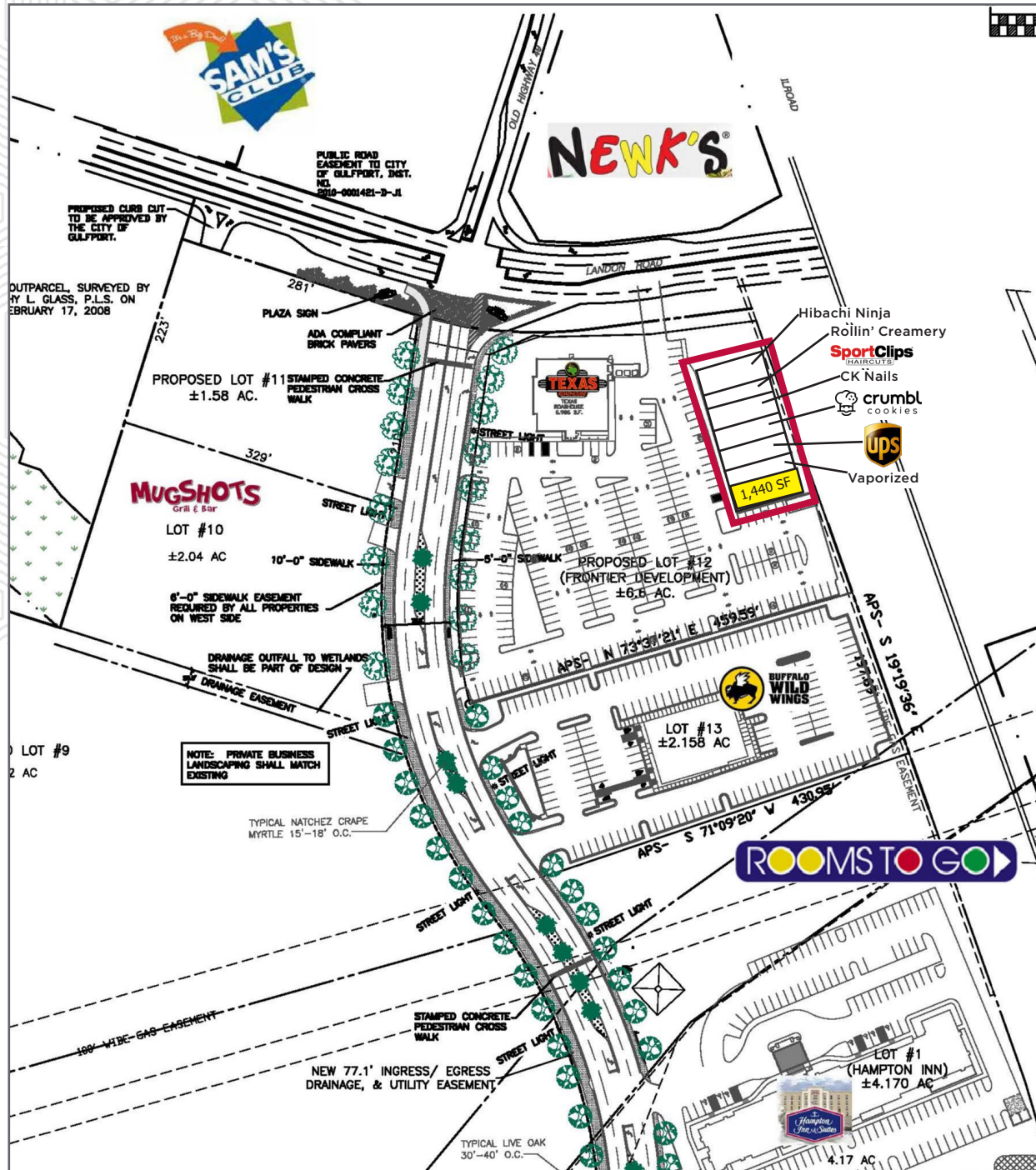


retail specialists

Anchor Plaza

I-10 & US-49 & Landon Road Gulfport, MS 39503

Site Plan



FOR LEASE

David Plummer david@retailspecialists.com 205.243.6729



retail specialists

Anchor Plaza

I-10 & US-49 & Landon Road Gulfport, MS 39503

Market Aerial



FOR LEASE

David Plummer david@retailspecialists.com 205.243.6729