



Mooreville Market Outparcels

I-565 & Mooreville Road

Huntsville, AL 35671



FOR SALE

Property Highlights

- Available for sale: Five (5) planned outparcels - can be combined or divided
- Zoned C-4
- Ideal for retail, hospitality, restaurant, fuel, grocery, self-storage and other retail users
- Excellent location just east of the corner of I-565 and I-65, the "pin corner" of north Alabama
- 8,600 new residential units close to site
- Call for pricing



OUTPARCELS
5



TRAFFIC
73,074 VPD



ACCESS
Interstate

Demographics	5 mile	7 mile	10 mile
Population	3,782	34,368	151,995
Growth (5 Yr.)	19.48%	8.81%	7.54%
Daytime Pop	4,373	57,185	160,481
Med HH Income	\$106,807	\$91,468	\$78,982

A.J. Smith, CCIM asmith@retailspecialists.com 256.509.5611



retail specialists

Huntsville, AL Opportunity

I-565 & Mooresville Rd Huntsville, AL 35671

Market Aerial



FOR SALE

A.J. Smith, CCIM asmith@retailspecialists.com 256.509.5611

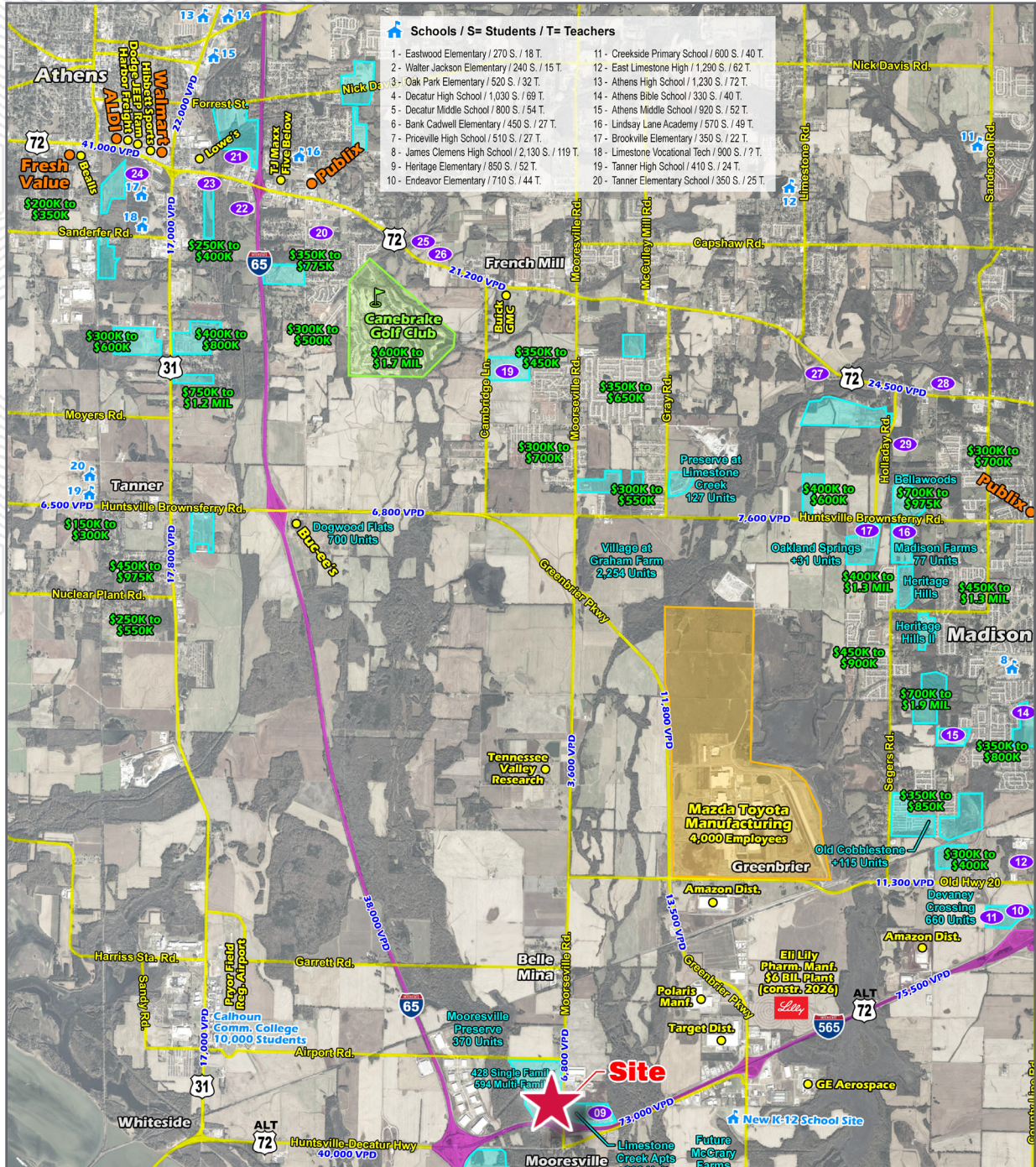


retail specialists

Huntsville, AL Opportunity

I-565 & Mooresville Rd Huntsville, AL 35671

Current & Future Residential Growth



FOR SALE

A.J. Smith, CCIM asmith@retailspecialists.com 256.509.5611

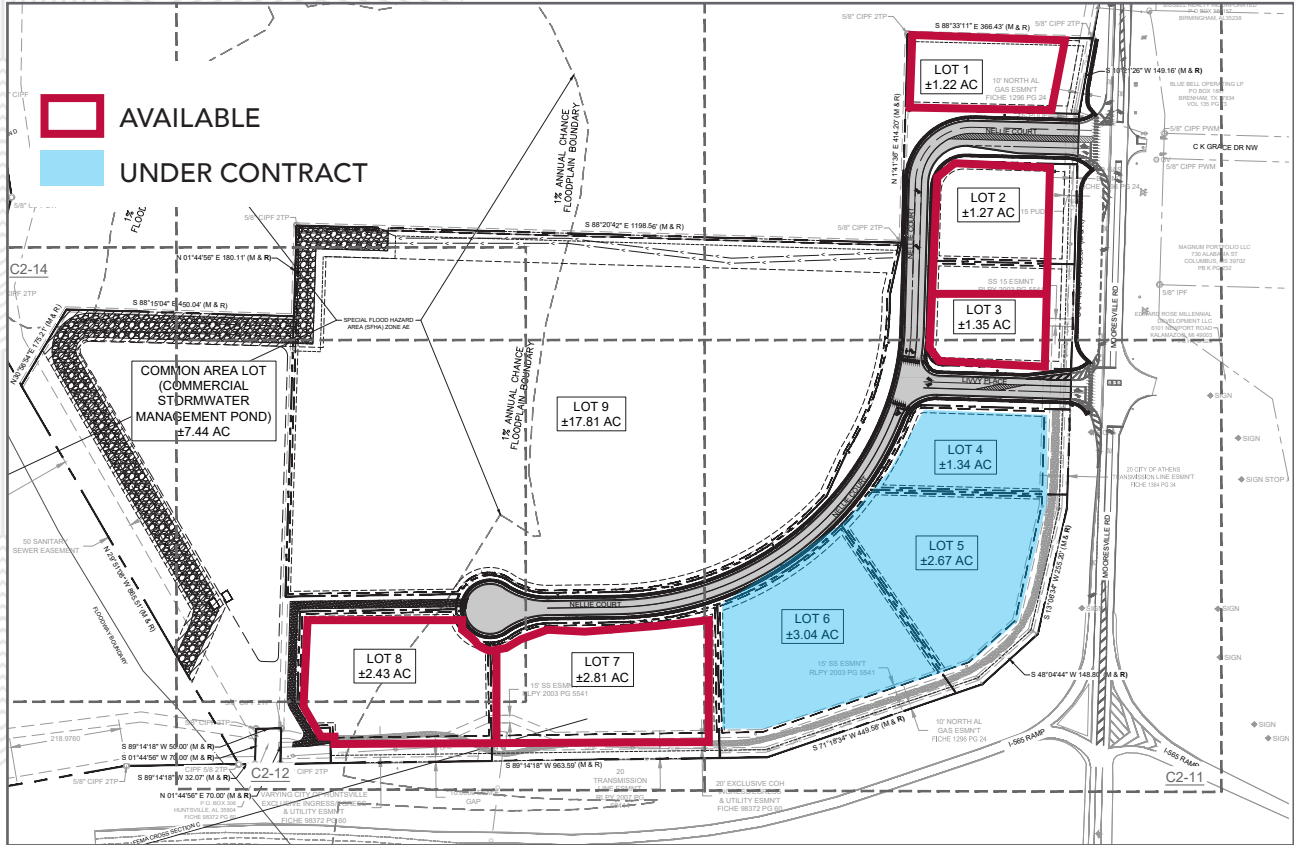


retail specialists

Huntsville, AL Opportunity

I-565 & Mooresville Rd Huntsville, AL 35671

Available Outparcels



Nation-Leading Growth

Huntsville is the fastest-growing city in Alabama and now the most populous, driving demand for retail, office, and industrial space.

Strong Economic Drivers

Anchored by aerospace, defense, tech, and biotech industries—including NASA, Redstone Arsenal, and multiple Fortune 500 companies.

High-Income, Educated Workforce

One of the highest concentrations of engineers and PhDs per capita in the U.S., supporting robust consumer spending.

FOR SALE

A.J. Smith, CCIM asmith@retailspecialists.com 256.509.5611